

EROSION CONTROL LEGEND

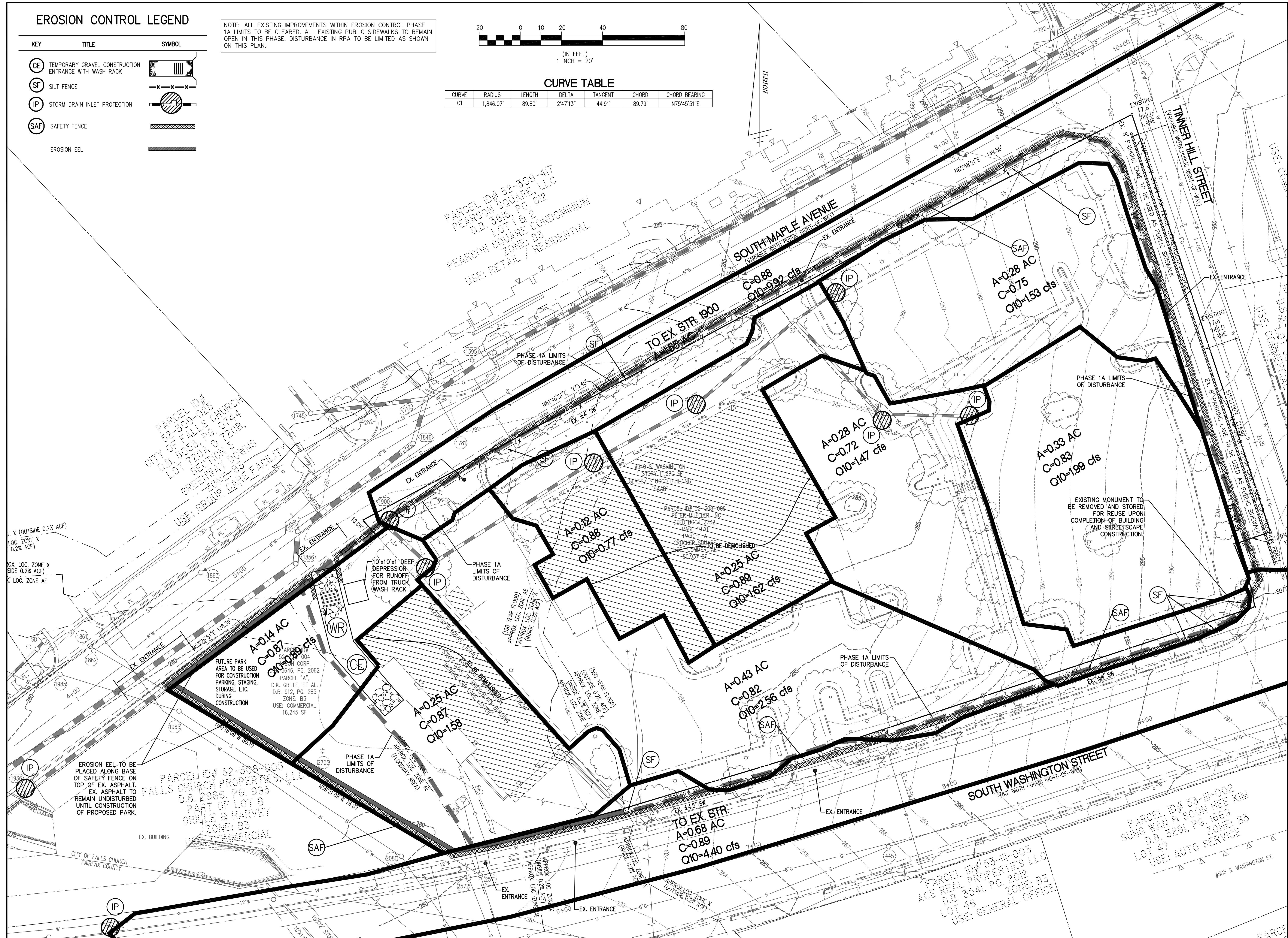
| KEY | TITLE | SYMBOL |
|-----|---|--------|
| CE | TEMPORARY GRAVEL CONSTRUCTION ENTRANCE WITH WASH RACK | |
| SF | SILT FENCE | |
| IP | STORM DRAIN INLET PROTECTION | |
| SAF | SAFETY FENCE | |
| | EROSION EEL | |

NOTE: ALL EXISTING IMPROVEMENTS WITHIN EROSION CONTROL PHASE 1A LIMITS TO BE CLEARED. ALL EXISTING PUBLIC SIDEWALKS TO REMAIN OPEN IN THIS PHASE. DISTURBANCE IN RPA TO BE LIMITED AS SHOWN ON THIS PLAN.



CURVE TABLE

| CURVE | RADIUS | LENGTH | DELTA | TANGENT | CHORD | CHORD BEARING |
|-------|-----------|--------|----------|---------|--------|---------------|
| C1 | 1,846.07' | 89.80' | 2°47'13" | 44.91' | 89.79' | N75°45'51"E |



Engineers • Surveyors • Planners
Landscape Architects • Arborists

WALTER L. PHILLIPS

207 PARK AVENUE
FALLS CHURCH, VIRGINIA 22046
(703) 532-6163 Fax (703) 533-1301
www.WLPINC.com

INCORPORATED ESTABLISHED 1945
SCALE: 1" = 20'
DATE: 02/20/13

Karen L. White
KAREN L. S. WHITE
Lic. No. 041850
6/2/11/13
PROF. SEAL

REVISION APPROVED BY

| NO. | DESCRIPTION | DATE | REV. BY | APPROVED | DATE |
|-----|-------------|------|---------|----------|------|
| | | | | | |
| | | | | | |

EROSION & SEDIMENT CONTROL PLAN - PHASE 1A

**THE RESERVE
AT TINNER HILL**
CITY OF FALLS CHURCH, VIRGINIA