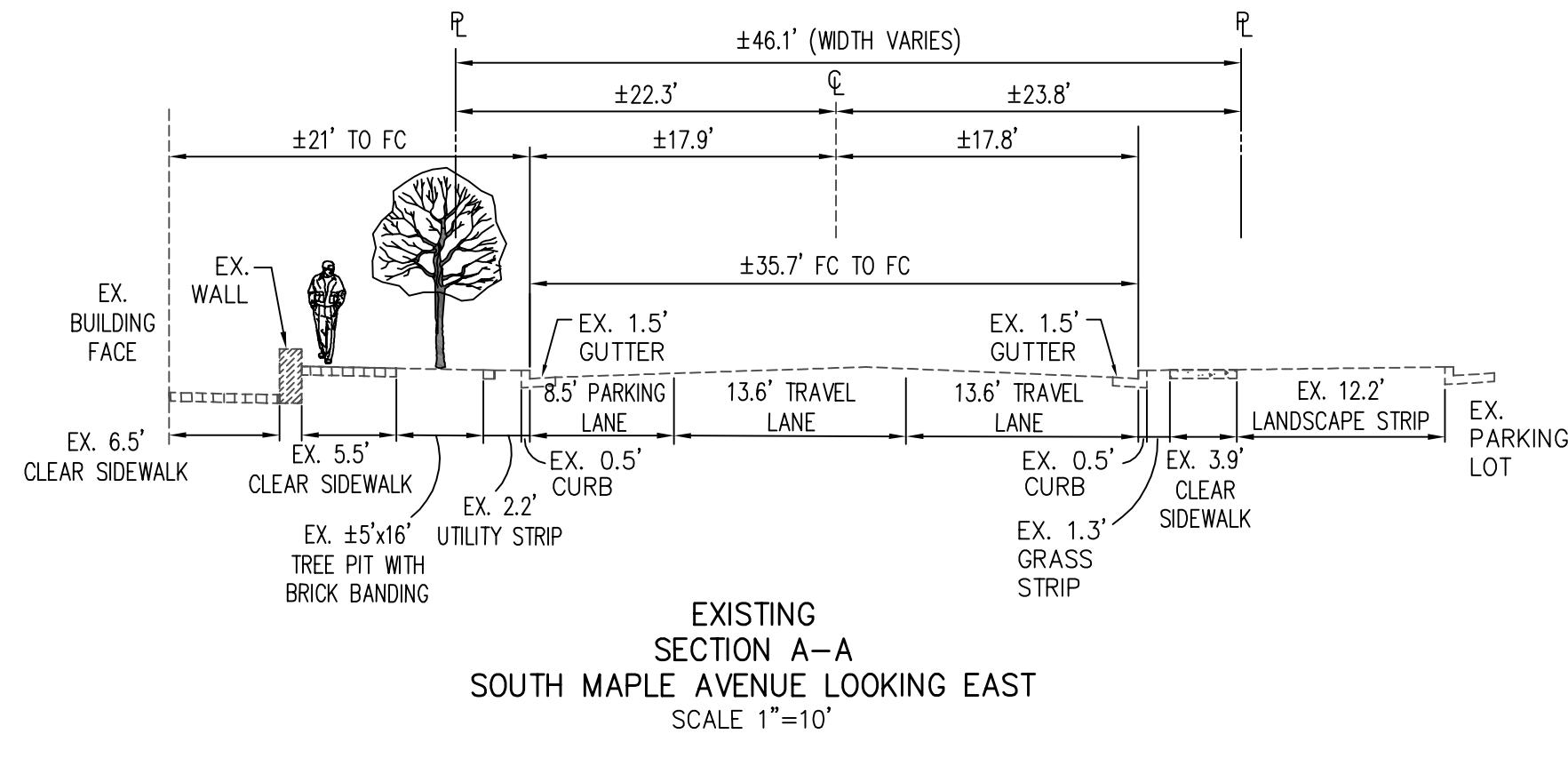
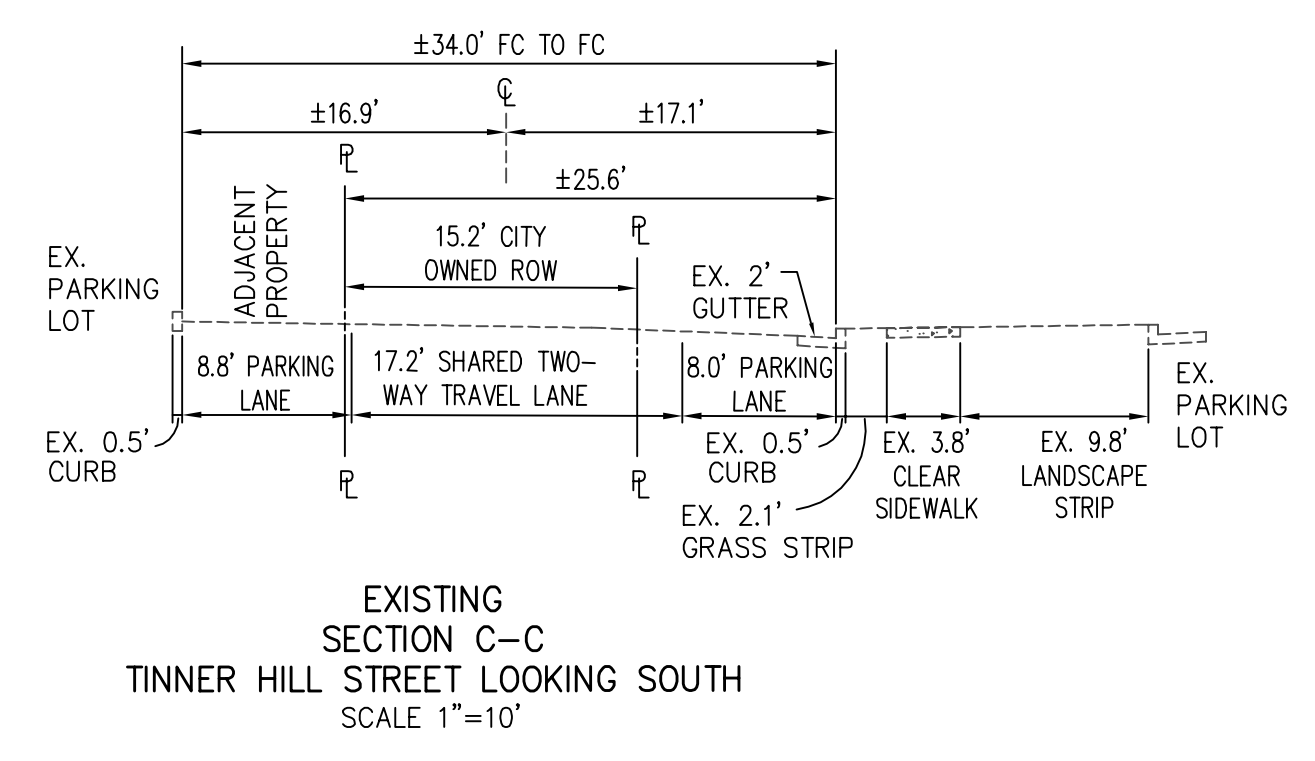


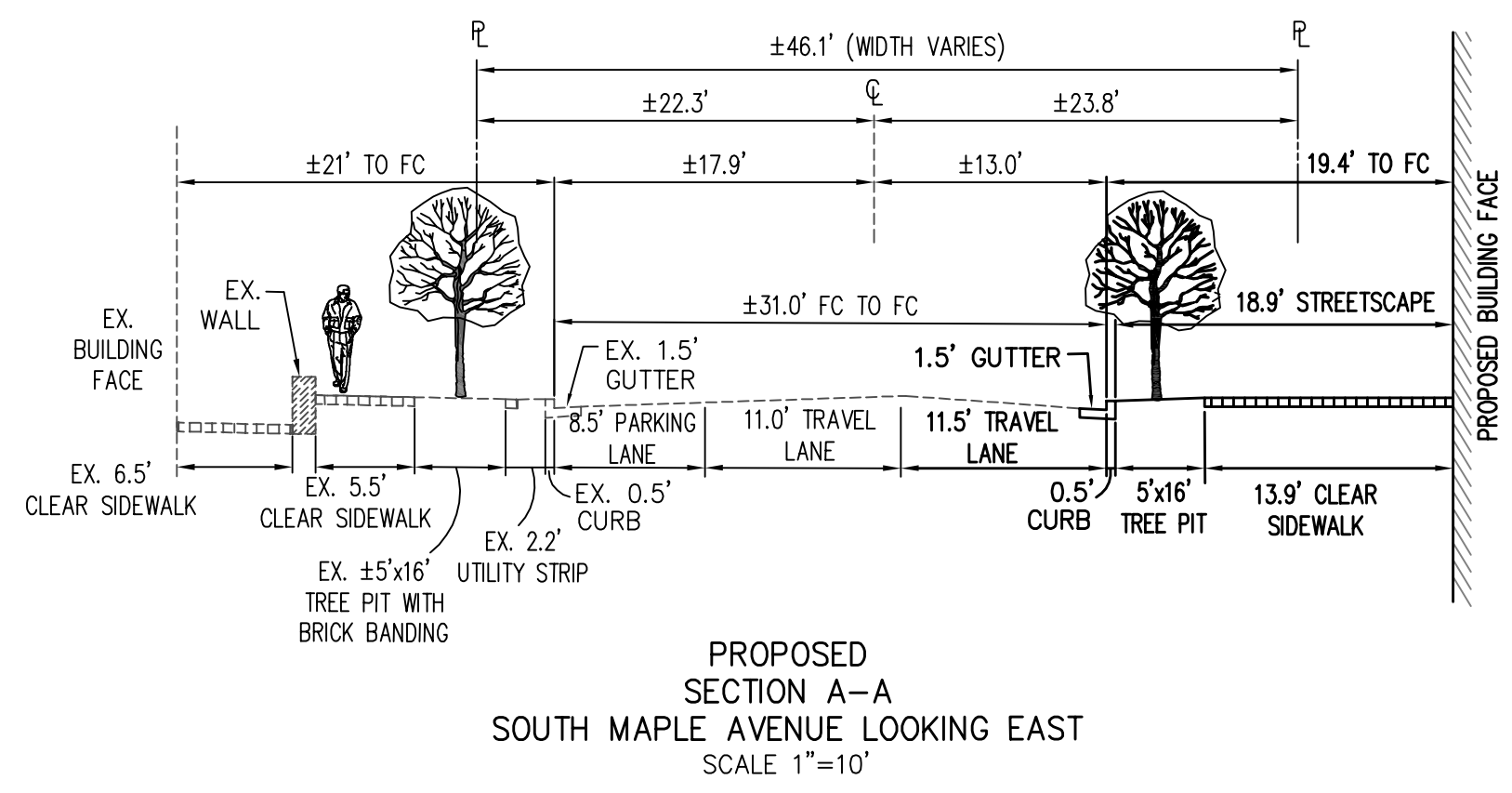
PLAN VIEW
SCALE: 1" = 40'



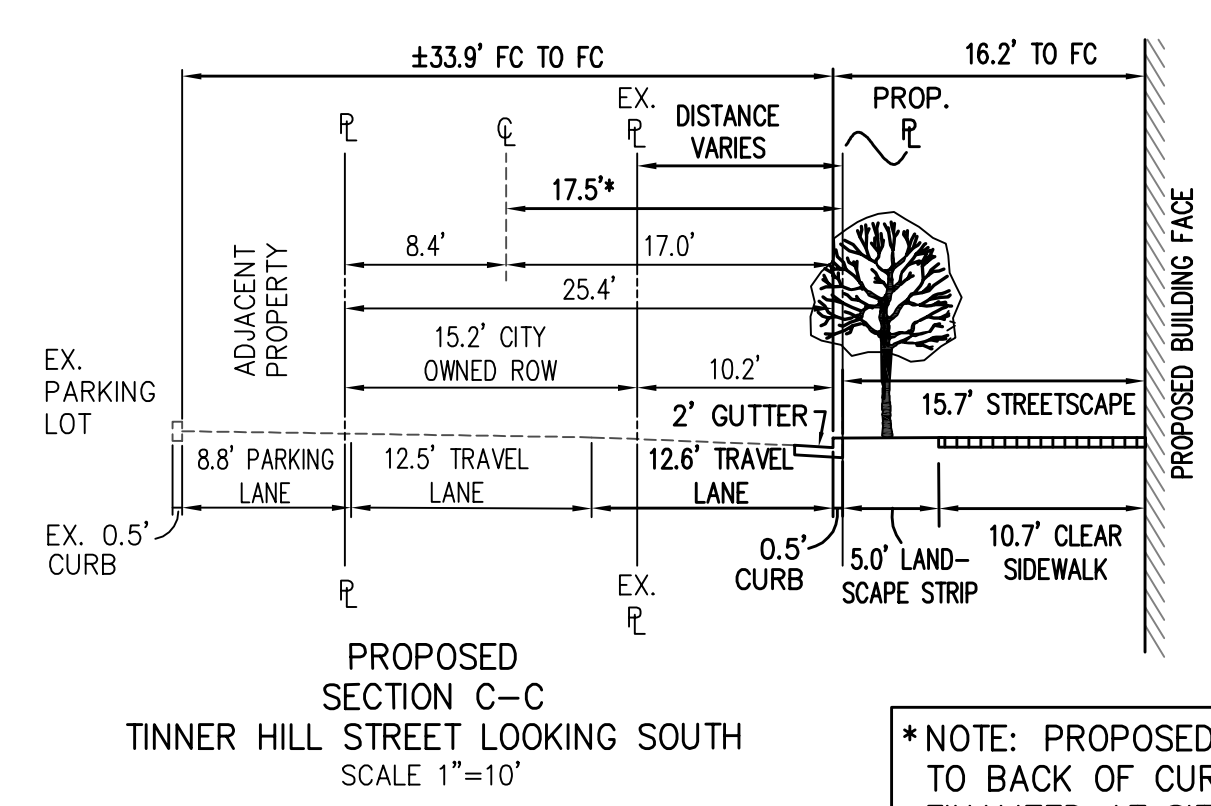
EXISTING SECTION A-A
SOUTH MAPLE AVENUE LOOKING EAST
SCALE 1"=10'



EXISTING SECTION C-C
TINNER HILL STREET LOOKING SOUTH
SCALE 1"=10'

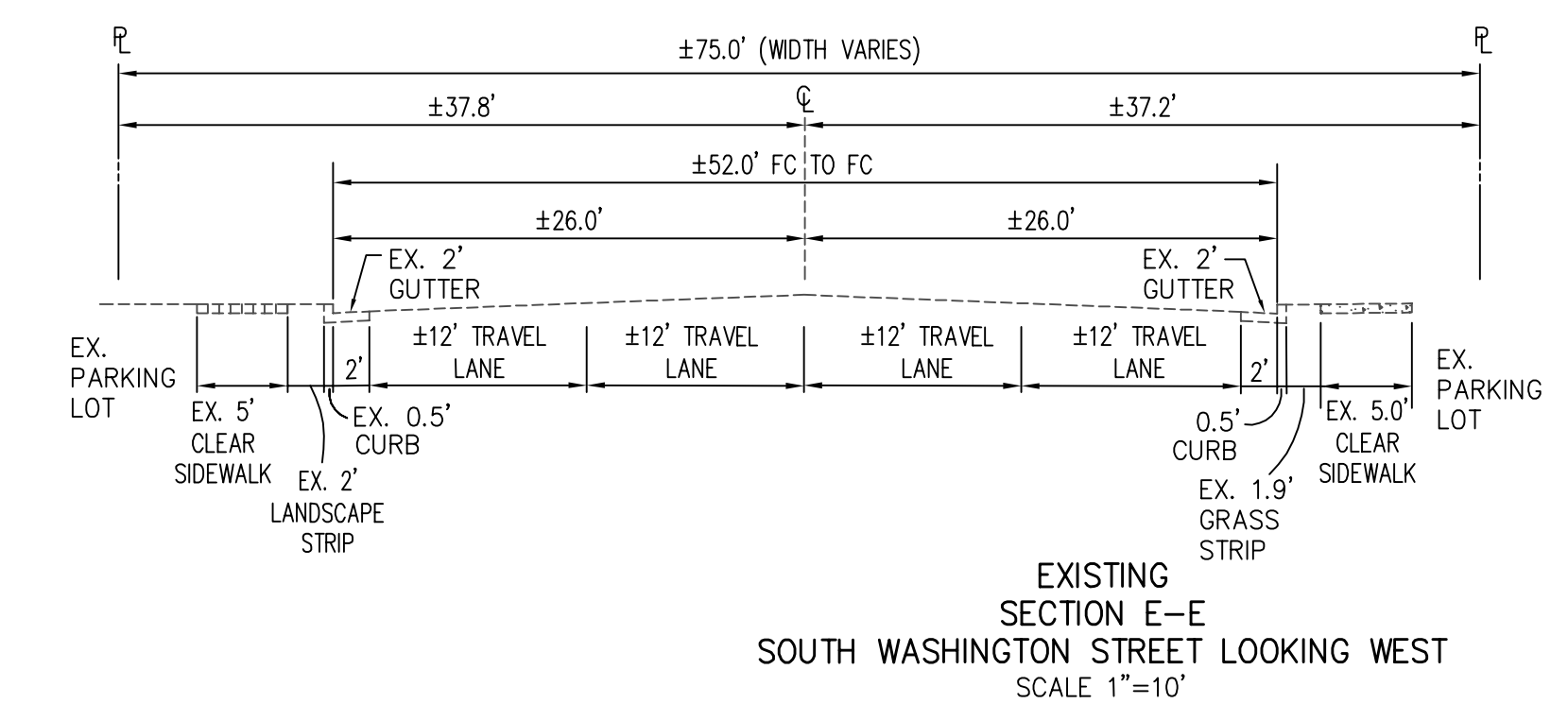


PROPOSED SECTION A-A
SOUTH MAPLE AVENUE LOOKING EAST
SCALE 1"=10'

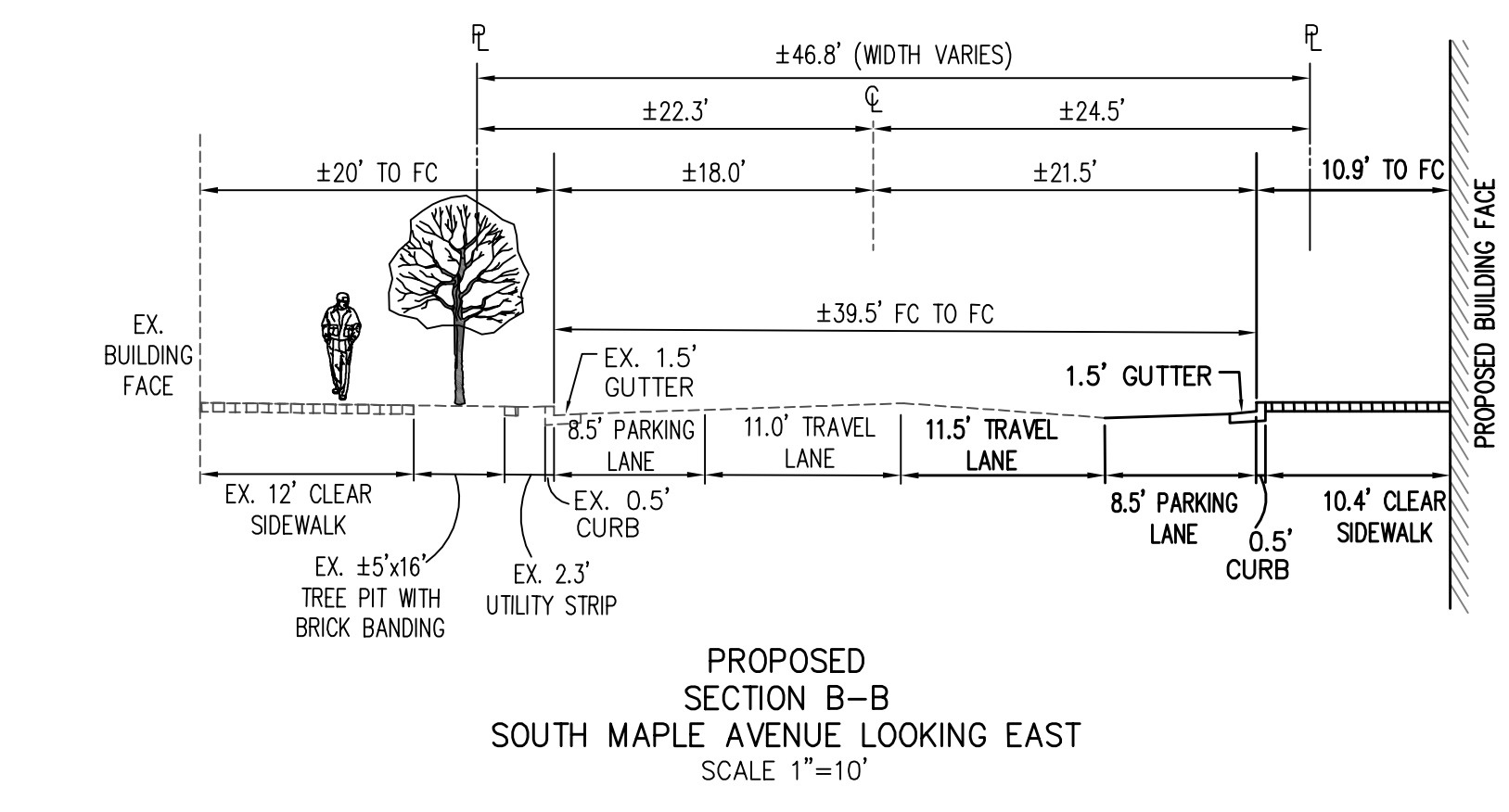


PROPOSED SECTION C-C
TINNER HILL STREET LOOKING SOUTH
SCALE 1"=10'

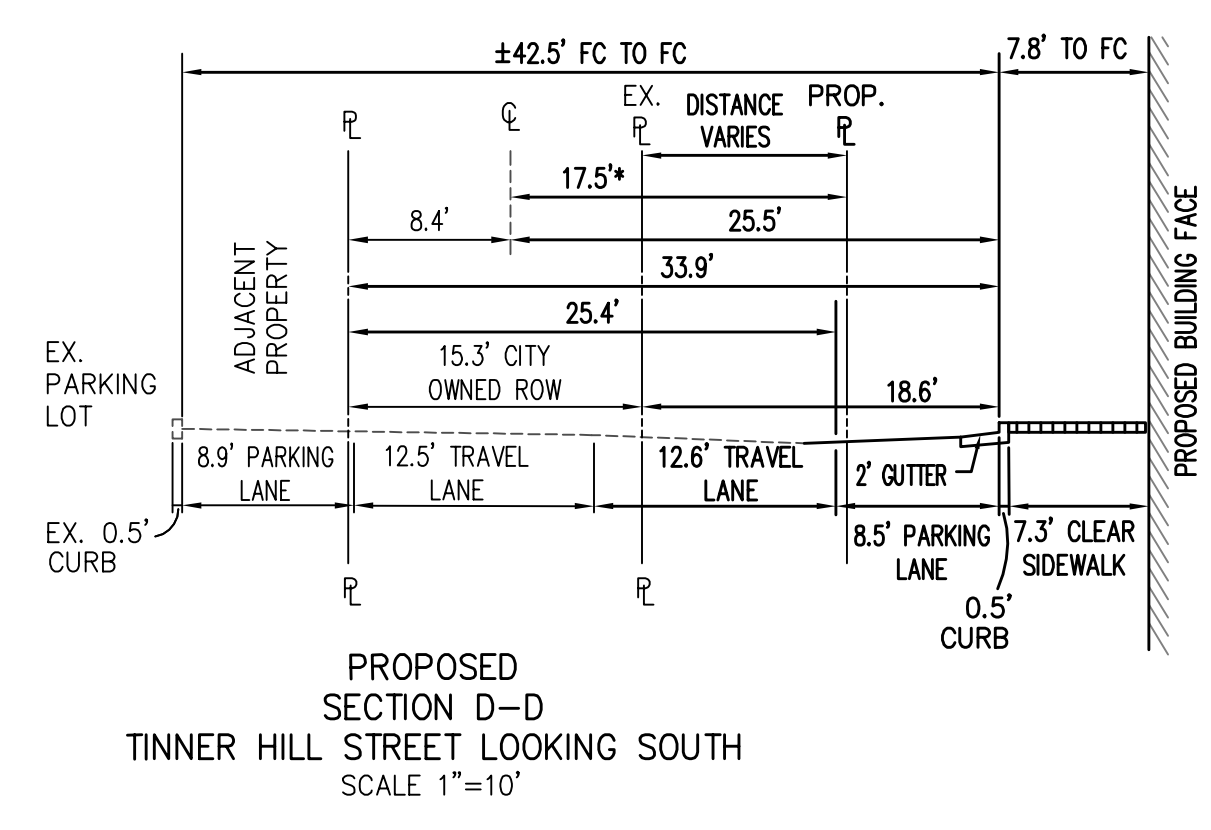
* NOTE: PROPOSED DEDICATION TO BACK OF CURB TO BE FINALIZED AT SITE PLAN



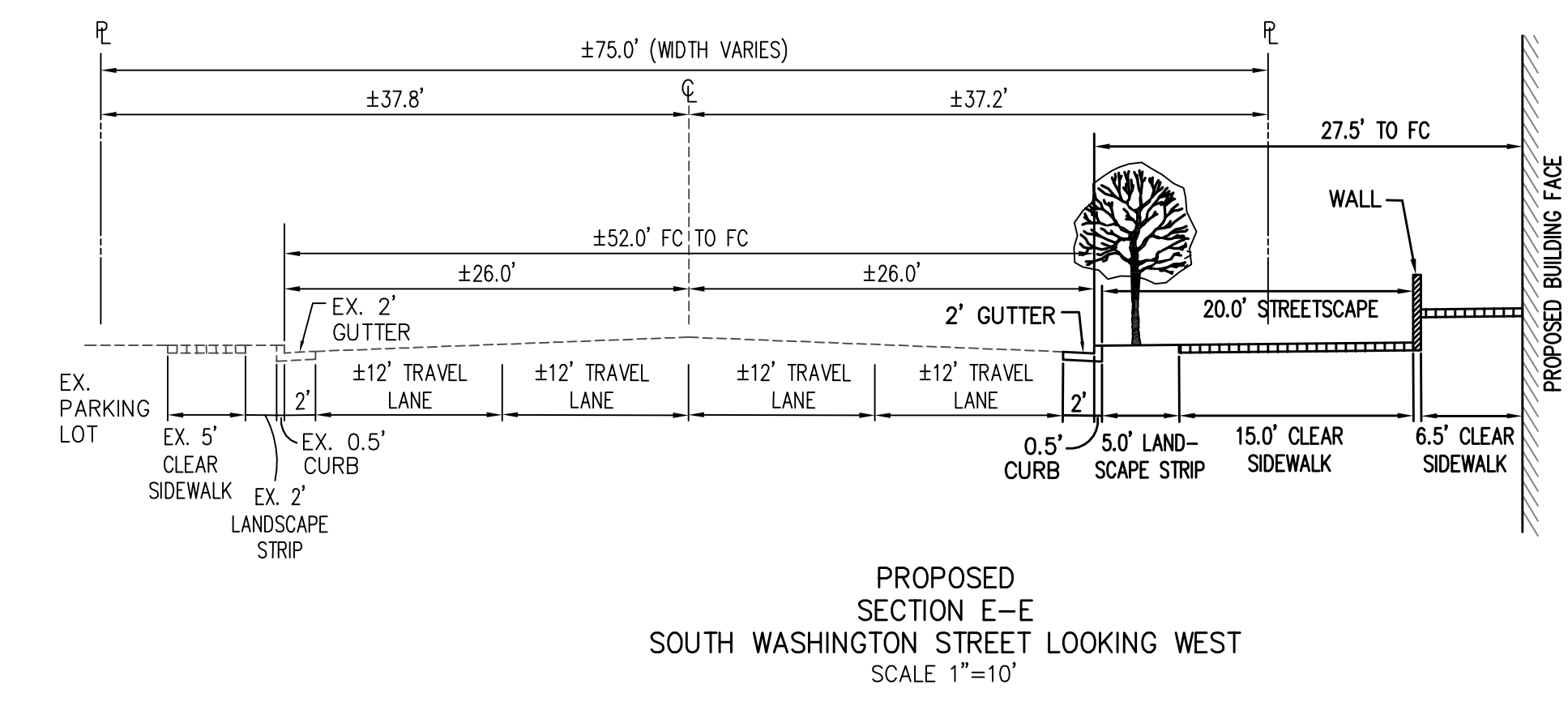
EXISTING SECTION E-E
SOUTH WASHINGTON STREET LOOKING WEST
SCALE 1"=10'



PROPOSED SECTION B-B
SOUTH MAPLE AVENUE LOOKING EAST
SCALE 1"=10'



PROPOSED SECTION D-D
TINNER HILL STREET LOOKING SOUTH
SCALE 1"=10'



PROPOSED SECTION E-E
SOUTH WASHINGTON STREET LOOKING WEST
SCALE 1"=10'

STREET CROSS-SECTIONS

**THE RESERVE AT TINNER HILL
CITY OF FALLS CHURCH, VIRGINIA**

WALTER L. PHILLIPS
INCORPORATED
ENGINEERS • SURVEYORS • PLANNERS
LANDSCAPE ARCHITECTS • ARBORISTS
207 PARK AVENUE
FALLS CHURCH, VIRGINIA 22046
(703) 532-6163 Fax (703) 533-1301
www.WLPHINC.com

DATE: 9/10/2012 REV: 12/20/13 4/24/13
DRAWN: MM
CHECKED: KJW

NO.	DESCRIPTION	DATE	REV. BY	APPROVED BY	DATE